

FOR LEASE

Retail Endcap

991 WATERTOWN STREET, NEWTON, MASSACHUSETTS

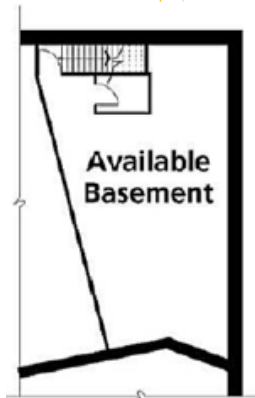
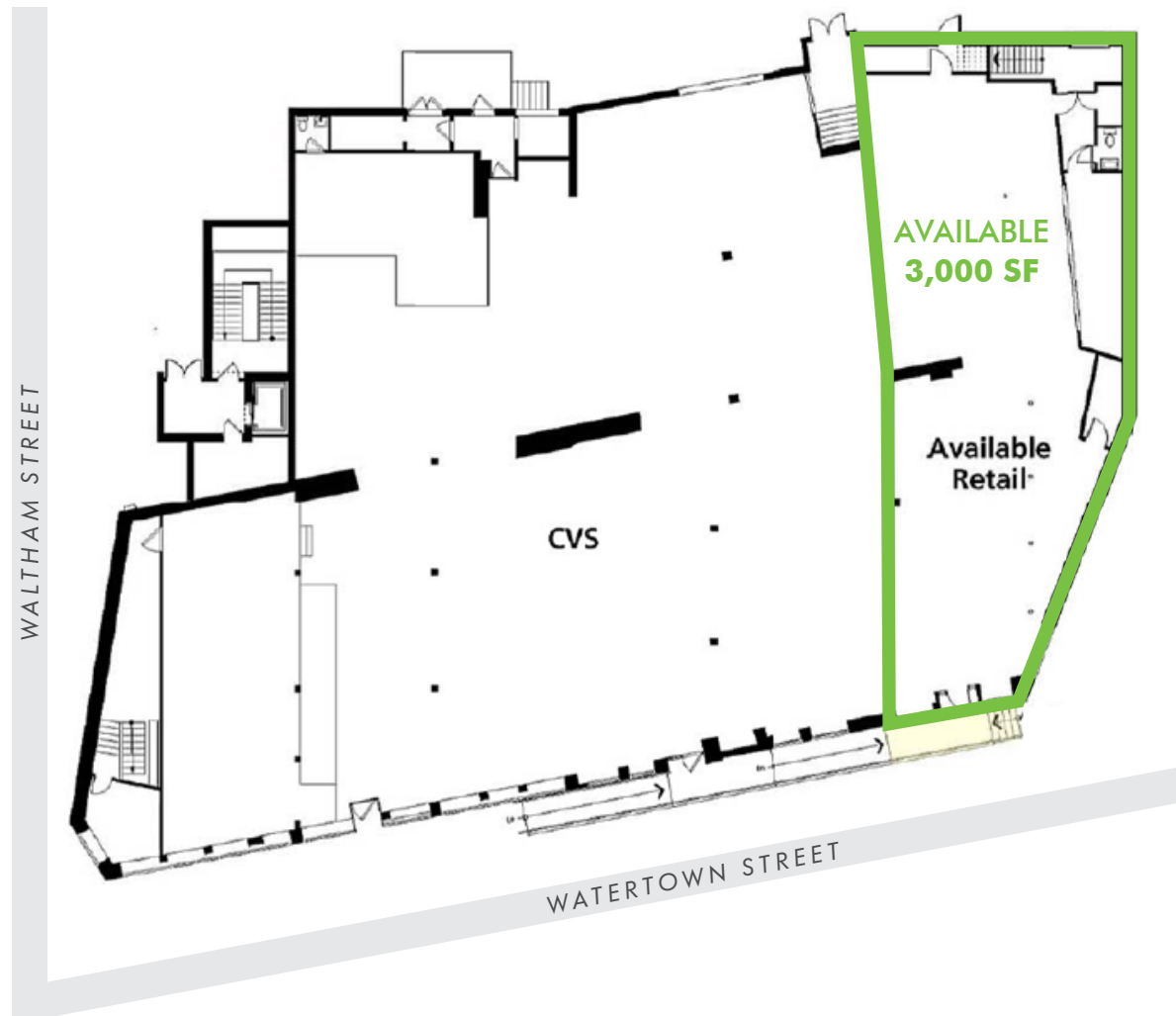
RETAIL

FOR LEASE

Retail Endcap

991 WATERTOWN STREET, NEWTON, MASSACHUSETTS

RETAIL



3,000 SF AVAILABLE

FEATURES:

- + 3,000 SF retail endcap space for lease
- + Additional basement space available
- + Co-tenants include CVS
- + 91 car parking field

CONTACT US

Ryan Minihan

Senior Associate
+1 617 912 6859
ryan.minihan@cbre.com

Nicole Nielsen

Senior Associate
+1 617 912 6879
nicole.nielsen@cbre.com

© 2019 CBRE, Inc. All rights reserved. This information has been obtained from sources believed reliable, but has not been verified for accuracy or completeness. You should conduct a careful, independent investigation of the property and verify all information. Any reliance on this information is solely at your own risk. Photos herein are the property of their respective owners. Use of these images without the express written consent of the owner is prohibited. CBRE and the CBRE logo are service marks of CBRE, Inc. All other marks displayed on this document are the property of their respective owners.

FOR LEASE

Retail Endcap

991 WATERTOWN STREET, NEWTON, MASSACHUSETTS

RETAIL

2018 DEMOGRAPHICS	1 mile	3 miles	5 miles	7 miles
Estimated Population	18,511	159,250	367,661	824,593
Estimated Households	7,005	60,378	143,180	322,807
Estimated Average Household Income	\$188,338	\$150,766	\$147,639	\$136,237
Employees	15,341	178,760	401,145	877,591

